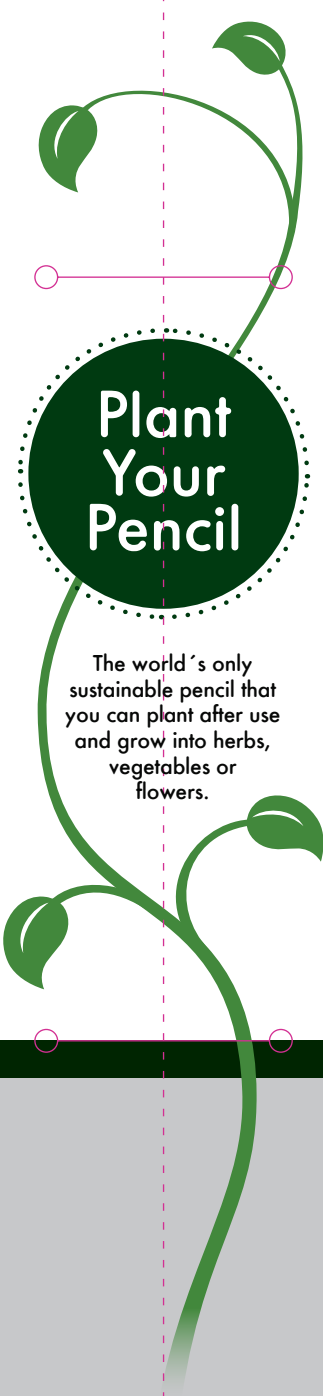


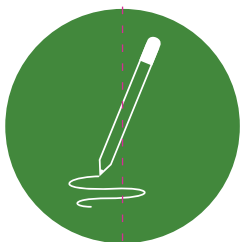
Sprouts®

A stylized green plant with leaves and a central circular graphic containing text. The plant is depicted with a central stem that curves upwards and then downwards, with several leaves. A vertical dashed line runs through the center of the plant. A horizontal pink line with small circles at its ends intersects the stem. A dark green circle with a dotted border is positioned in the middle of the stem, containing the text 'Plant Your Pencil'. Below the circle, there is a block of text. The bottom of the plant is shown as a root system extending into a grey ground area. The entire illustration is enclosed in a pink rectangular border, which is itself inside a larger blue rectangular border.

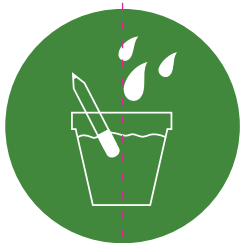
Plant Your Pencil

The world's only sustainable pencil that you can plant after use and grow into herbs, vegetables or flowers.

Global Patent Pending



1. Write with your pencil



2. Plant it - Add sunlight & water



3. Fresh plants will sprout

*All Sprout pencils
are 100% sustainable,
non-toxic & non-gmo.*

*Follow instructions on:
www.igreengadgets.it*

*Keep it at temperatures environment
for a maximum of 12 months
before planting seeds.*

*EN71 approved:
Keep away from
children 0-3 y/o.*



100% recycled paper

PINK LINE = BLEED GUIDE

BLUE LINE = FINAL TRIMMED SIZE GUIDE

GREEN LINE = MARGIN GUIDE

Bleed = When the artwork is meant to touch the edge of the trimmed final size bleed is required. Elements such as textures, photos, graphics are common items that use bleed.

Final trimmed size = This is the final size that the product will be.

Margin = The space between the trim edge required to make sure that important information is not lost in the trimming process. Anything that is important such as text needs to be within this margin.

